

SEAL:



- LEGEND**
- 42" HT. WOOD PICKET FENCE
  - TREE PROTECTION FENCE; REFER TO ARBORIST FOR DETAILS
  - RETAINING WALLS; ALLAN BLOCK OR EQUIVALENT
  - MAGLIN BENCH; SURFACE MOUNT
  - MAGLIN BIKE RACK; 400 SERIES; 9 BIKES; SURFACE MOUNT
  - PROPOSED BOLLARD LIGHT
  - PROPOSED STEP LIGHT

NO.	DATE	REVISION DESCRIPTION	DR.
3	24.JAN.23	NEW SITE PLAN	RI
2	23.NOV.08	REVISED PER ADP COMMENTS	CW
1	23.JUN.06	ISSUED FOR DP	RI

NO. DATE REVISION DESCRIPTION DR.

CLIENT:

PROJECT:

**4670 HAMMOND BAY**  
NANAIMO, BC

DRAWING TITLE:  
**LANDSCAPE PLAN**

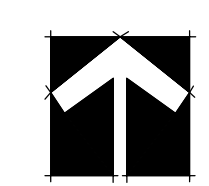
DATE: 23.MAR.31 DRAWING NUMBER:  
SCALE: 1:500  
DRAWN: CW  
DESIGN: CW  
CHK'D: BA

RECEIVED  
DP1317  
2024-JAN-31  
Landscape Planning

**L1**  
OF 13

TREE SCHEDULE				PMG PROJECT NUMBER: 22-040
KEY	QTY	BOTANICAL NAME	COMMON NAME	PLANTED SIZE / REMARKS
	49	ACER CIRCINATUM	VINE MAPLE	2M HT; B&B; 3 STEM CLUMP
	13	FAGUS SYLVATICA 'DAWYCK GOLD'	DAWYCK GOLD BEECH	6CM CAL; B&B
	31	GINKGO BILOBA 'AUTUMN GOLD'	AUTUMN GOLD MAIDENHAIR TREE	6CM CAL; 2M STD; B&B
	14	PARROTIA PERSICA 'VANESSA'	VANESSA PERSIAN IRONWOOD	6CM CAL; 1.8M STANDARD; B&B
	60	PICEA OMORIKA	SERBIAN SPRUCE	2.5M HT; B&B
	26	PSEUDOTSUGA MENZIESII	DOUGLAS FIR	3M HT; B&B
	26	QUERCUS ROBUR 'CRIMSON SPIRE'	CRIMSON SPIRE OAK	6CM CAL; 1.8M STD; B&B

NOTES: \* PLANT SIZES IN THIS LIST ARE SPECIFIED ACCORDING TO THE BC LANDSCAPE STANDARD AND CANADIAN LANDSCAPE STANDARD, LATEST EDITION. CONTAINER SIZES SPECIFIED AS PER CNLA STANDARD. BOTH PLANT SIZE AND CONTAINER SIZE ARE THE MINIMUM ACCEPTABLE SIZES. \* REFER TO SPECIFICATIONS FOR DEFINED CONTAINER MEASUREMENTS AND OTHER PLANT MATERIAL REQUIREMENTS. \* SEARCH AND REVIEW: MAKE PLANT MATERIAL AVAILABLE FOR OPTIONAL REVIEW BY LANDSCAPE ARCHITECT AT SOURCE OF SUPPLY. AREA OF SEARCH TO INCLUDE LOWER MAINLAND AND FRASER VALLEY. \* SUBSTITUTIONS: OBTAIN WRITTEN APPROVAL FROM THE LANDSCAPE ARCHITECT PRIOR TO MAKING ANY SUBSTITUTIONS TO THE SPECIFIED MATERIAL. UNAPPROVED SUBSTITUTIONS WILL BE REJECTED. ALLOW A MINIMUM OF FIVE DAYS PRIOR TO DELIVERY FOR REQUEST TO SUBSTITUTE. SUBSTITUTIONS ARE SUBJECT TO BC LANDSCAPE STANDARD AND CANADIAN LANDSCAPE STANDARD - DEFINITION OF CONDITIONS OF AVAILABILITY. \* ALL LANDSCAPE MATERIAL AND WORKMANSHIP MUST MEET OR EXCEED BC LANDSCAPE STANDARD AND CANADIAN LANDSCAPE STANDARD LATEST EDITION. \* ALL PLANT MATERIAL MUST BE PROVIDED FROM CERTIFIED DISEASE FREE NURSERY. \* BIO-SOLIDS NOT PERMITTED IN GROWING MEDIUM UNLESS AUTHORIZED BY LANDSCAPE ARCHITECT.



SEAL:

NO.	DATE	REVISION DESCRIPTION	DR.
3	24.JAN.23	NEW SITE PLAN	RI
2	23.NOV.08	REVISED PER ADP COMMENTS	CW
1	23.JUN.06	ISSUED FOR DP	RI

CLIENT:

PROJECT:

**4670 HAMMOND BAY**

NANAIMO, BC

DRAWING TITLE:

**LANDSCAPE GRADING PLAN** RECEIVED  
DP1317  
2024-JAN-31

DATE: 23.MAR.31 DRAWING NUMBER:

SCALE: 1:300

DRAWN: CW

DESIGN: CW

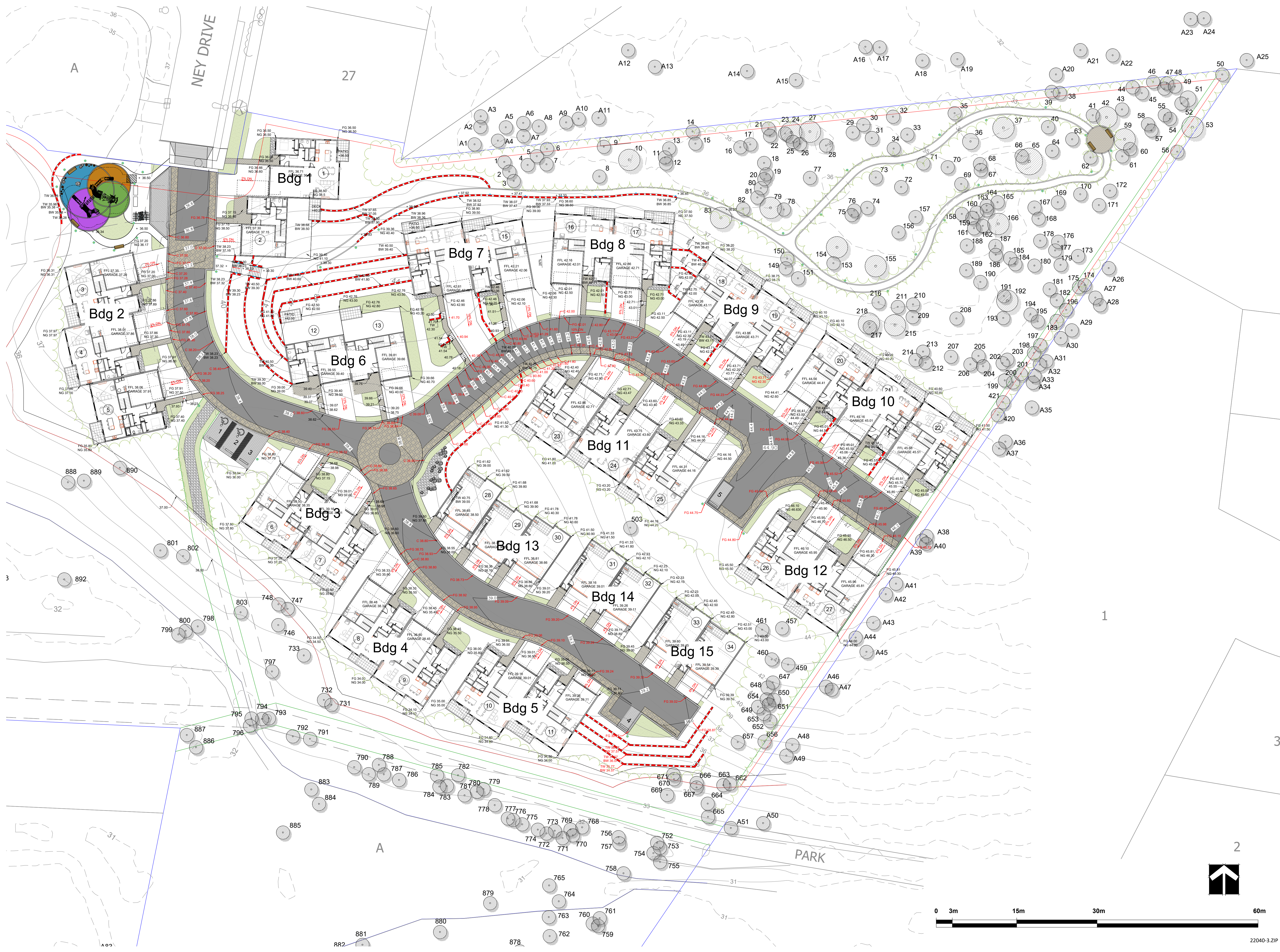
CHK'D: BA

**L2**

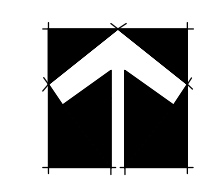
OF 13

PMG PROJECT NUMBER:

**22-040**



2



22040-3.ZIP

SEAL:

NO.	DATE	REVISION DESCRIPTION	DR.
3	24.JAN.23	NEW SITE PLAN	RI
2	23.NOV.08	REVISED PER ADP COMMENTS	CW
1	23.JUN.06	ISSUED FOR DP	RI

CLIENT:

PROJECT:

**4670 HAMMOND BAY**  
NANAIMO, BC

DRAWING TITLE:

**SHRUB PLAN**

RECEIVED  
DP1317  
2024-JAN-31  
Landscape Planning

DATE: 23.MAR.31

DRAWING NUMBER:

SCALE: 1:100

DRAWN: CW

DESIGN: CW

CHK'D: BA

**L3**

OF 13

PMG PROJECT NUMBER:

**22-040**



SEAL:

NO.	DATE	REVISION DESCRIPTION	DR.
3	24.JAN.23	NEW SITE PLAN	RI
2	23.NOV.08	REVISED PER ADP COMMENTS	CW
1	23.JUN.06	ISSUED FOR DP	RI

CLIENT:

PROJECT:

**4670 HAMMOND BAY**

NANAIMO, BC

DRAWING TITLE:

**SHRUB PLAN**

DATE: 23.MAR.31 DRAWING NUMBER:

SCALE: 1:100

DRAWN: CW

DESIGN: CW

CHK'D: BA

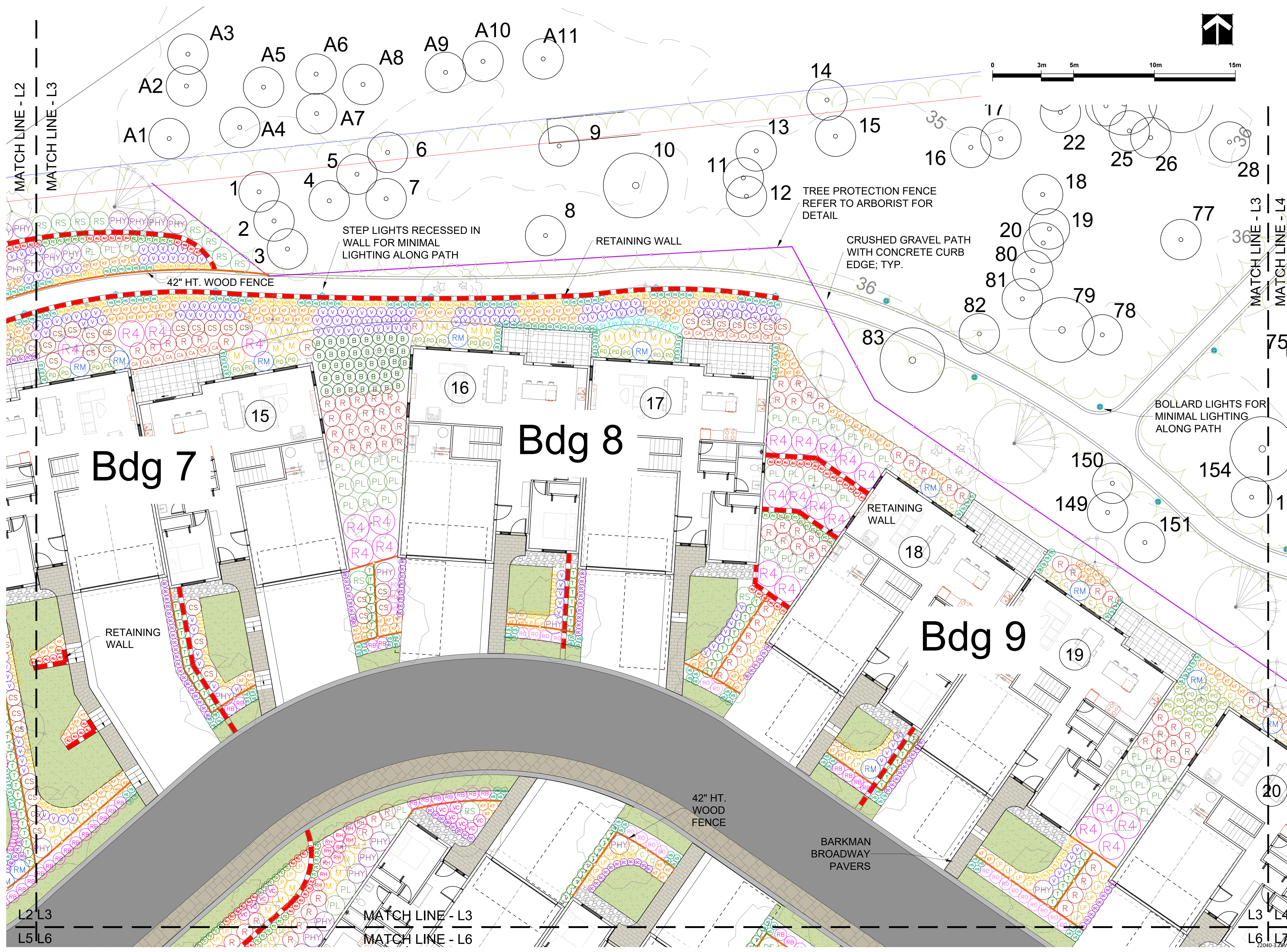
PMG PROJECT NUMBER:

RECEIVED  
**DP1317**  
2024-JAN-31  
Landscape Planning

**L4**

OF 13

22-040



MATCH LINE - L2  
MATCH LINE - L3

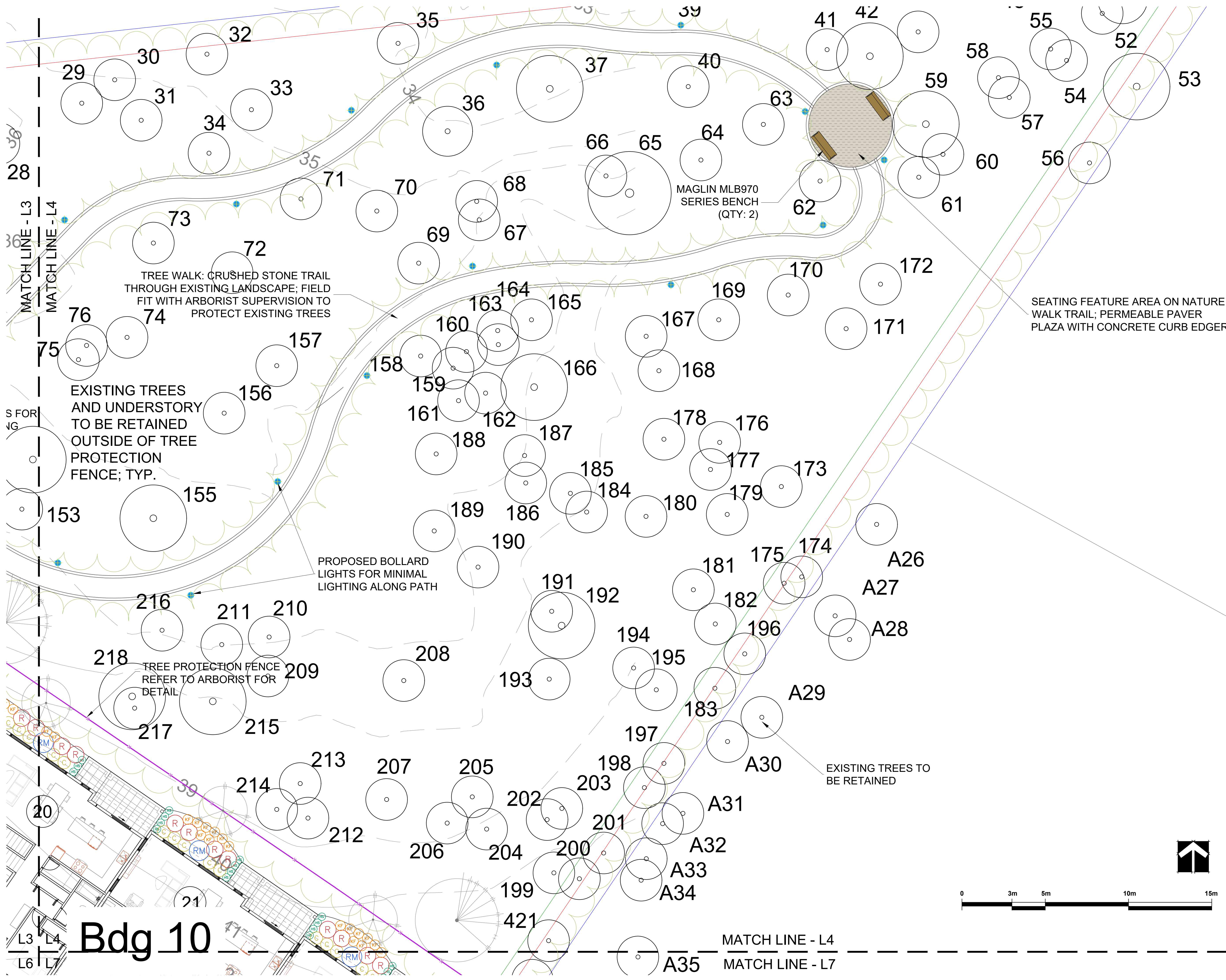
L2 L3  
L5 L6

MATCH LINE - L3  
MATCH LINE - L6

MATCH LINE - L3  
MATCH LINE - L4

L3 L4  
L6 L7

SEAL:



NO.	DATE	REVISION DESCRIPTION	DR.
3	24.JAN.23	NEW SITE PLAN	RI
2	23.NOV.08	REVISED PER ADP COMMENTS	CW
1	23.JUN.06	ISSUED FOR DP	RI

CLIENT:

PROJECT:  
**4670 HAMMOND BAY**  
NANAIMO, BC

DRAWING TITLE: **SHRUB PLAN**

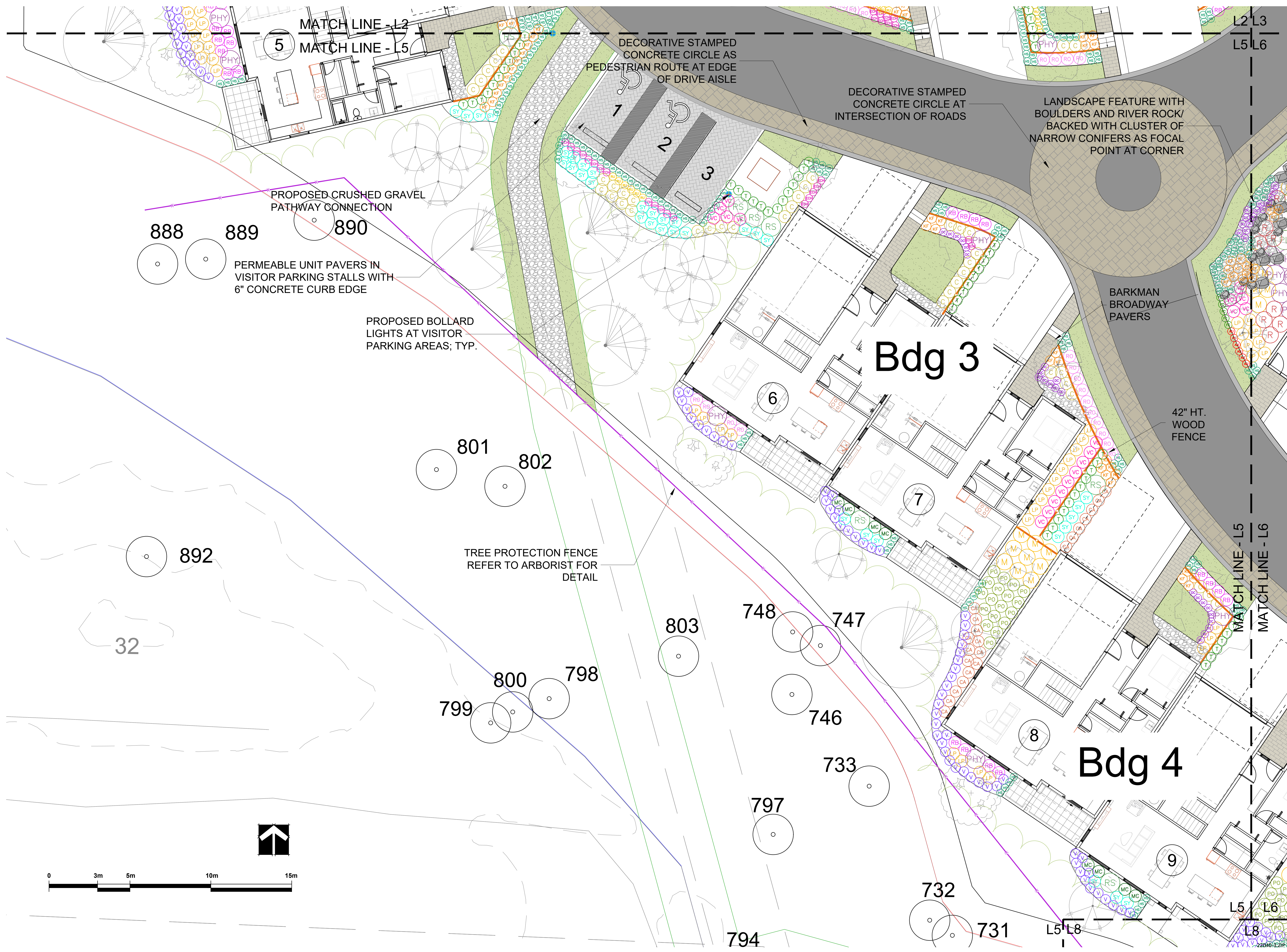
**RECEIVED**  
**DP1317**  
**2024-JAN-31**

DATE: 23.MAR.31 DRAWING NUMBER:  
SCALE: 1:100  
DRAWN: CW  
DESIGN: CW  
CHK'D: BA

**L5**

OF 13

SEAL:



NO.	DATE	REVISION DESCRIPTION	DR.
3	24.JAN.23	NEW SITE PLAN	RI
2	23.NOV.08	REVISED PER ADP COMMENTS	CW
1	23.JUN.06	ISSUED FOR DP	RI

CLIENT:

PROJECT:  
**4670 HAMMOND BAY**  
 NANAIMO, BC

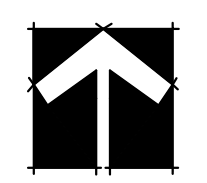
DRAWING TITLE:  
**SHRUB PLAN**

**RECEIVED**  
**DP1317**  
 2024-JAN-31  
 Current Planning

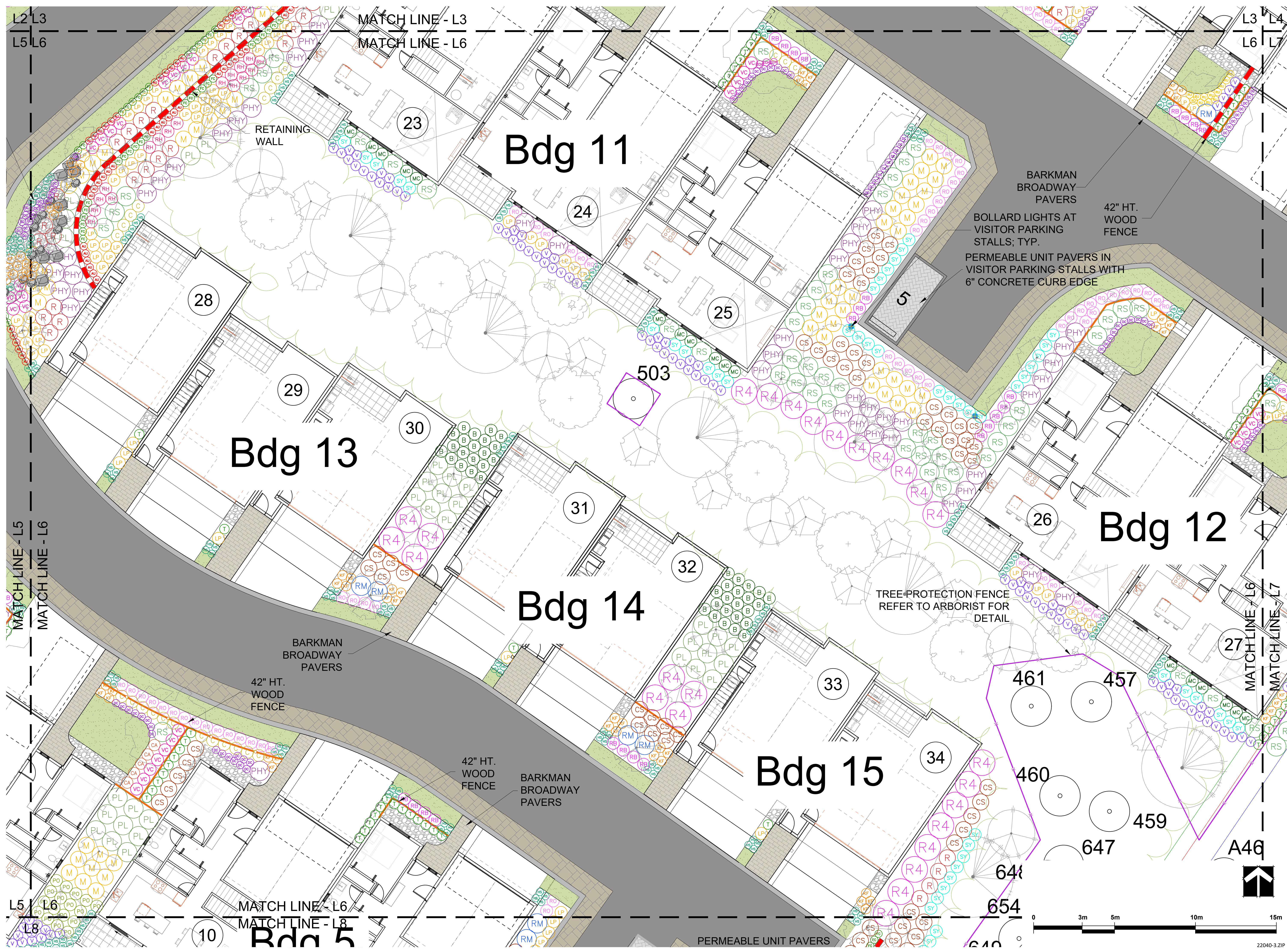
DATE: 23.MAR.31 DRAWING NUMBER:  
 SCALE: 1:100  
 DRAWN: CW  
 DESIGN: CW  
 CHK'D: BA

**L6**  
 OF 13

PMG PROJECT NUMBER: 22-040



SEAL:



NO.	DATE	REVISION DESCRIPTION	DR.
3	24.JAN.23	NEW SITE PLAN	RI
2	23.NOV.08	REVISED PER ADP COMMENTS	CW
1	23.JUN.06	ISSUED FOR DP	RI

NO.	DATE	REVISION DESCRIPTION	DR.
3	24.JAN.23	NEW SITE PLAN	RI
2	23.NOV.08	REVISED PER ADP COMMENTS	CW
1	23.JUN.06	ISSUED FOR DP	RI

CLIENT:

PROJECT:  
**4670 HAMMOND BAY**  
 NANAIMO, BC

DRAWING TITLE:  
**SHRUB PLAN**

RECEIVED  
 DP1317  
 2024-JAN-31  
 Current Planning

DATE: 23.MAR.31 DRAWING NUMBER:  
 SCALE: 1:100  
 DRAWN: CW  
 DESIGN: CW  
 CHK'D: BA

**L7**  
 OF 13

PMG PROJECT NUMBER: 22-040

22040-3.ZIP



© Copyright reserved. This drawing and design is the property of PMG Landscape Architects and may not be reproduced or used for other projects without their permission.

**pmg**  
 LANDSCAPE ARCHITECTS  
 Suite C100 - 4185 Still Creek Drive  
 Burnaby, British Columbia, V5C 6G9  
 p: 604 294-0011 ; f: 604 294-0022

SEAL:


NO.	DATE	REVISION DESCRIPTION	DR.
3	24.JAN.23	NEW SITE PLAN	RI
2	23.NOV.08	REVISED PER ADP COMMENTS	CW
1	23.JUN.06	ISSUED FOR DP	RI

CLIENT:

PROJECT:

**4670 HAMMOND BAY**  
 NANAIMO, BC

DRAWING TITLE: **SHRUB PLAN**

**RECEIVED**  
 DP1317  
 2024-JAN-31  
 Current Planning

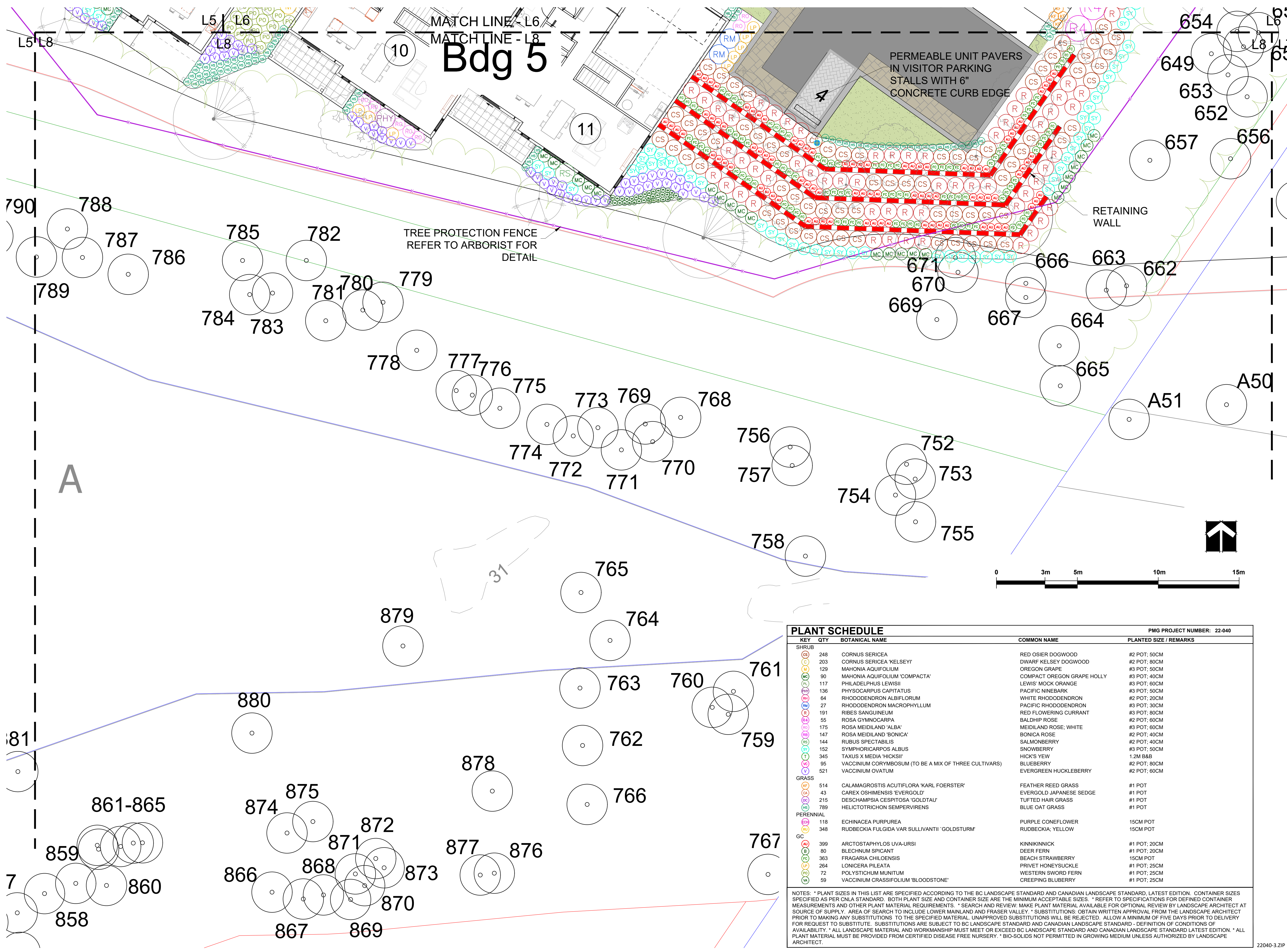
DATE: 23.MAR.31 DRAWING NUMBER:  
 SCALE: 1:100  
 DRAWN: CW  
 DESIGN: CW  
 CHK'D: BA

**L8**  
 OF 13





SEAL:



PLANT SCHEDULE				PMG PROJECT NUMBER: 22-040
KEY	QTY	BOTANICAL NAME	COMMON NAME	PLANTED SIZE / REMARKS
<b>SHRUB</b>				
CS	248	CORNUS SERICEA	RED OSIER DOGWOOD	#2 POT; 50CM
C	203	CORNUS SERICEA 'KELSEY'	DWARF KELSEY DOGWOOD	#2 POT; 80CM
MA	129	MAHONIA AQUIFOLIUM	OREGON GRAPE	#3 POT; 50CM
MO	90	MAHONIA AQUIFOLIUM 'COMPACTA'	COMPACT OREGON GRAPE HOLLY	#3 POT; 40CM
ML	117	PHILADELPHUS LEWISII	LEWIS' MOCK ORANGE	#3 POT; 60CM
PC	136	PHYSOCARPUS CAPITATUS	PACIFIC NINEBARK	#3 POT; 50CM
WR	64	RHODODENDRON ALBIFLORUM	WHITE RHODODENDRON	#2 POT; 20CM
RR	27	RHODODENDRON MACROPHYLLUM	PACIFIC RHODODENDRON	#3 POT; 30CM
R	191	RIBES SANGUINEUM	RED FLOWERING CURRANT	#3 POT; 80CM
RO	55	ROSA GYMNOCARPA	BALDHIP ROSE	#2 POT; 60CM
RM	175	ROSA MEIDLAND 'ALBA'	MEIDLAND ROSE: WHITE	#3 POT; 60CM
BN	147	ROSA MEIDLAND 'BONICA'	BONICA ROSE	#2 POT; 40CM
SB	144	RUBUS SPECTABILIS	SALMONBERRY	#2 POT; 40CM
SN	152	SYMPHORICARPOS ALBUS	SNOWBERRY	#3 POT; 50CM
HY	345	TAXUS X MEDIA 'HICKSII'	HICKS' YEW	1.2M B&B
CB	95	VACCINIUM CORYMBOSUM (TO BE A MIX OF THREE CULTIVARS)	BLUEBERRY	#2 POT; 80CM
OV	521	VACCINIUM OVATUM	EVERGREEN HUCKLEBERRY	#2 POT; 60CM
<b>GRASS</b>				
CF	514	CALAMAGROSTIS ACUTIFLORA 'KARL FOERSTER'	FEATHER REED GRASS	#1 POT
EG	43	CAREX OSHIMENSIS 'EVERGOLD'	EVERGOLD JAPANESE SEDGE	#1 POT
TH	215	DESCHAMPسيا CESPITOSA 'GOLDTAL'	TUFTED HAIR GRASS	#1 POT
BO	789	HELICTOTRICHON SEMPERVIRENS	BLUE OAT GRASS	#1 POT
<b>PERENNIAL</b>				
CP	118	ECHINACEA PURPUREA	PURPLE CONEFLOWER	15CM POT
RY	348	RUBEBECKIA FULGIDA VAR SULLIVANTII 'GOLDSTURM'	RUBEBECKIA; YELLOW	15CM POT
<b>GC</b>				
AK	399	ARCTOSTAPHYLOS UVA-URSI	KINKINNICK	#1 POT; 20CM
B	80	BLECHNUM SPICANT	DEER FERN	#1 POT; 20CM
CS	363	FRAGARIA CHILOENSIS	BEACH STRAWBERRY	15CM POT
LP	264	LONICERA PILEATA	PRIVET HONEYSUCKLE	#1 POT; 25CM
SW	72	POLYSTICHUM MUNITUM	WESTERN SWORD FERN	#1 POT; 25CM
BL	59	VACCINIUM CRASSIFOLIUM 'BLOODSTONE'	CREeping BLUEBERRY	#1 POT; 25CM

NOTES: \* PLANT SIZES IN THIS LIST ARE SPECIFIED ACCORDING TO THE BC LANDSCAPE STANDARD AND CANADIAN LANDSCAPE STANDARD, LATEST EDITION. \* CONTAINER SIZES SPECIFIED AS PER CNLA STANDARD. BOTH PLANT SIZE AND CONTAINER SIZE ARE THE MINIMUM ACCEPTABLE SIZES. \* REFER TO SPECIFICATIONS FOR DEFINED CONTAINER MEASUREMENTS AND OTHER PLANT MATERIAL REQUIREMENTS. \* SEARCH AND REVIEW: MAKE PLANT MATERIAL AVAILABLE FOR OPTIONAL REVIEW BY LANDSCAPE ARCHITECT AT SOURCE OF SUPPLY. AREA OF SEARCH TO INCLUDE LOWER MAINLAND AND FRASER VALLEY. \* SUBSTITUTIONS: OBTAIN WRITTEN APPROVAL FROM THE LANDSCAPE ARCHITECT PRIOR TO MAKING ANY SUBSTITUTIONS TO THE SPECIFIED MATERIAL. UNAPPROVED SUBSTITUTIONS WILL BE REJECTED. ALLOW A MINIMUM OF FIVE DAYS PRIOR TO DELIVERY FOR REQUEST TO SUBSTITUTE. SUBSTITUTIONS ARE SUBJECT TO BC LANDSCAPE STANDARD AND CANADIAN LANDSCAPE STANDARD - DEFINITION OF CONDITIONS OF AVAILABILITY. \* ALL LANDSCAPE MATERIAL AND WORKMANSHIP MUST MEET OR EXCEED BC LANDSCAPE STANDARD AND CANADIAN LANDSCAPE STANDARD LATEST EDITION. \* ALL PLANT MATERIAL MUST BE PROVIDED FROM CERTIFIED DISEASE FREE NURSERY. \* BIO-SOLIDS NOT PERMITTED IN GROWING MEDIUM UNLESS AUTHORIZED BY LANDSCAPE ARCHITECT.

NO.	DATE	REVISION DESCRIPTION	DR.
3	24.JAN.23	NEW SITE PLAN	RI
2	23.NOV.08	REVISED PER ADP COMMENTS	CW
1	23.JUN.06	ISSUED FOR DP	RI

CLIENT:

PROJECT:  
**4670 HAMMOND BAY**  
NANAIMO, BC

DRAWING TITLE:  
**SHRUB PLAN**

DATE: 23.MAR.31 DRAWING NUMBER:

SCALE: 1:100

DRAWN: CW

DESIGN: CW

CHK'D: BA

PMG PROJECT NUMBER: 22-040

RECEIVED  
DP1317  
2024-JAN-31  
L9

**L9**

OF 13







